

Cadoro Velvet

S. 377

san marco
SISTEMI VERNICIANTI PER L'EDILIZIA

Decorativi



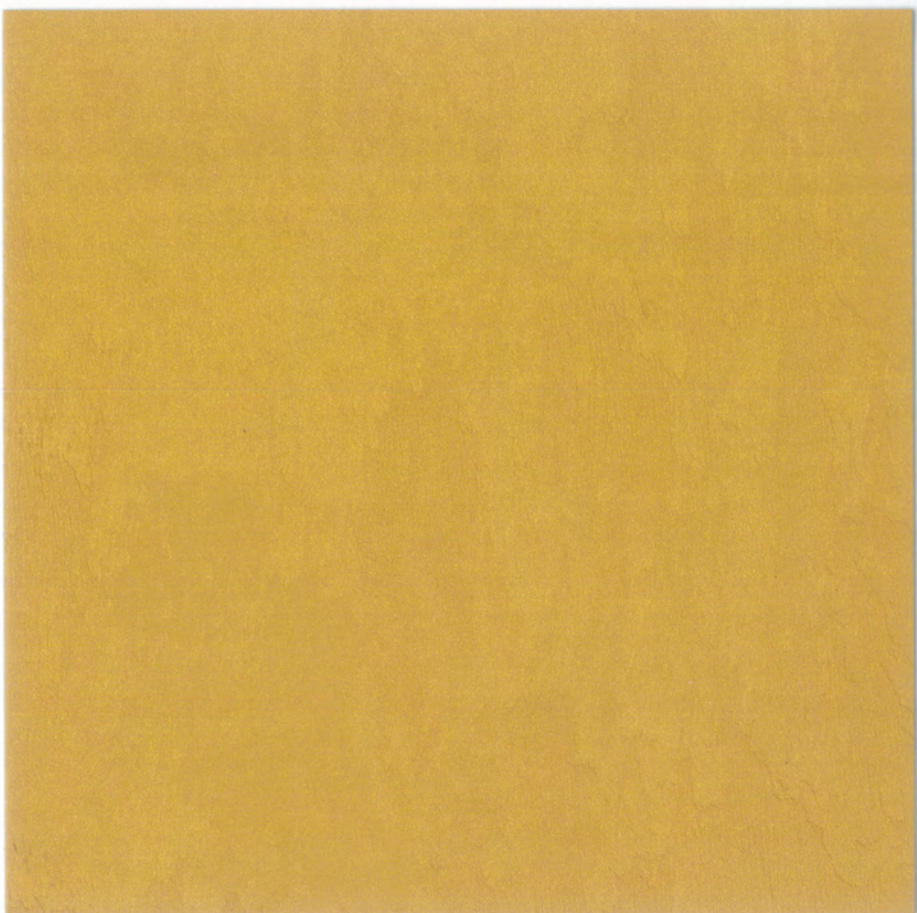
FINITURA DECORATIVA
EFFETTO VELLUTATO PER INTERNI
VELVETY EFFECT
DECORATIVE FINISH FOR INTERIORS



made in Italy



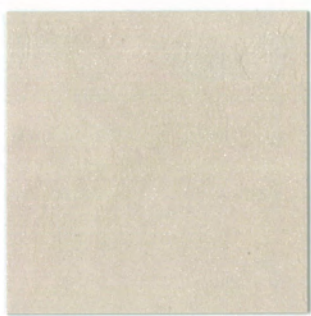
Bianco



Oro Zecchino



M601



M602



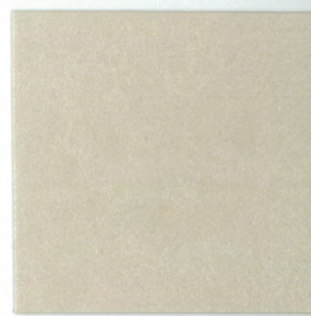
M603



M604



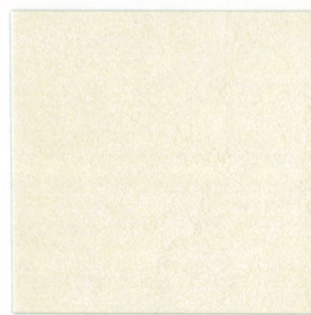
M605



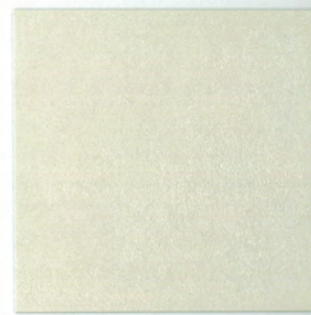
M606



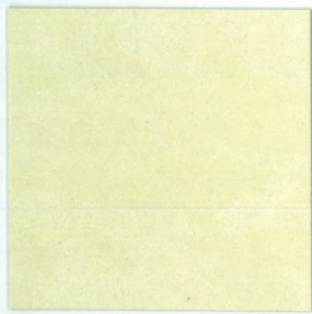
M607



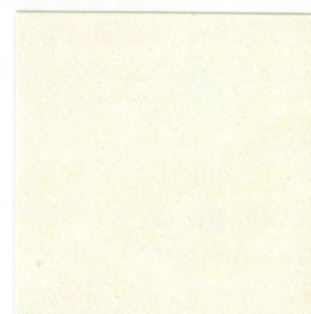
M608



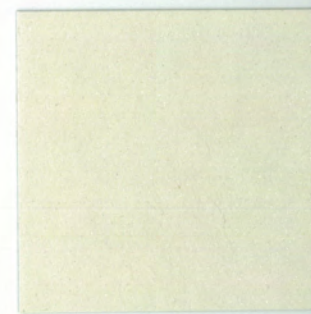
M609



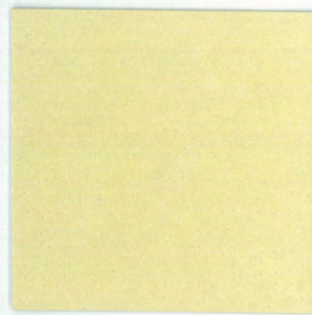
M610



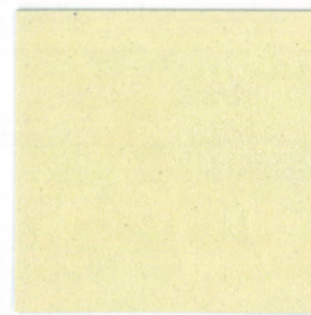
M611



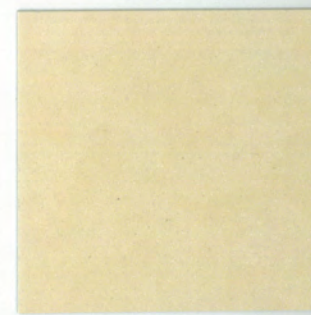
M612



M613



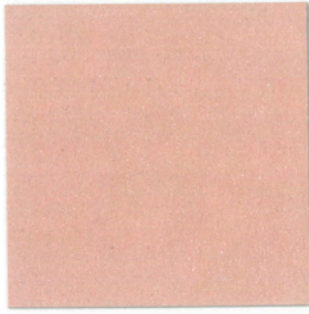
M614



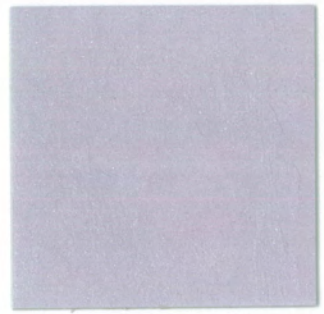
M615



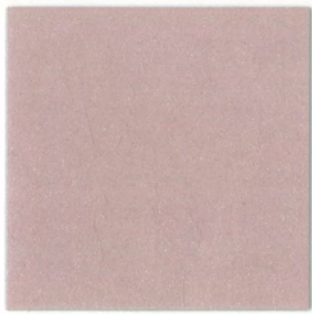
M616



M617



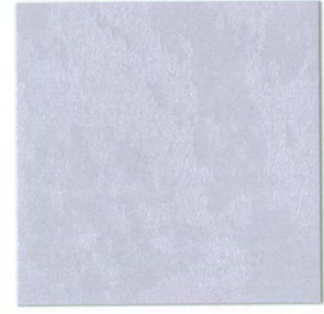
M618



M619



M620



M621



M622



M623



M624



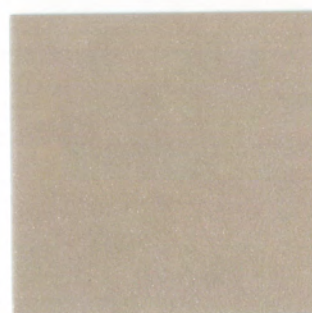
M625



M626



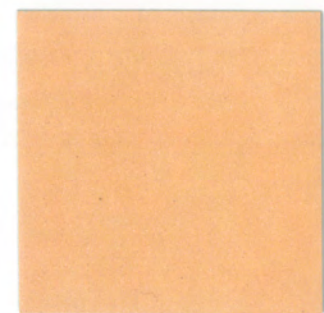
M627



M628



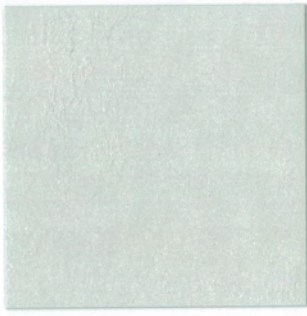
M629



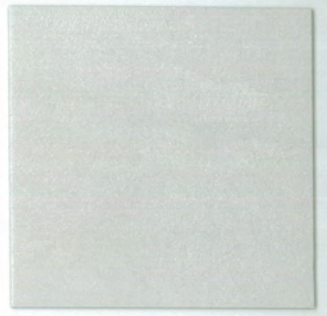
M630



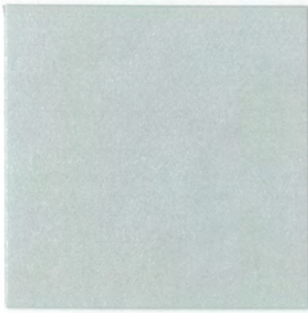
M631



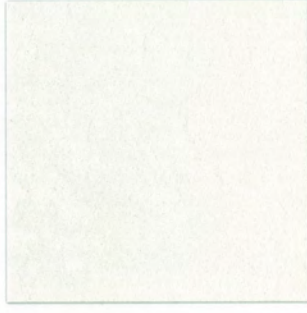
M632



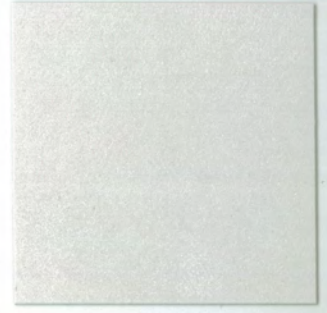
M633



M634



M635



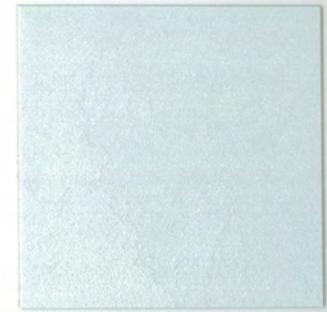
M636



Argento



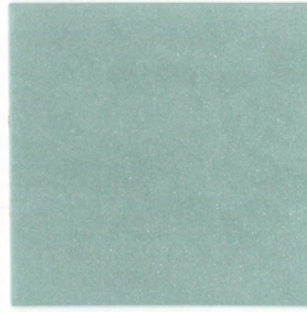
M637



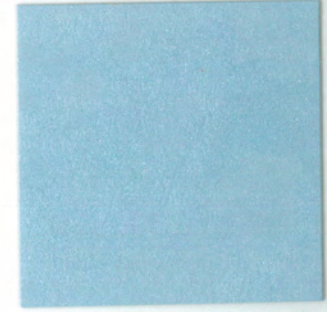
M638



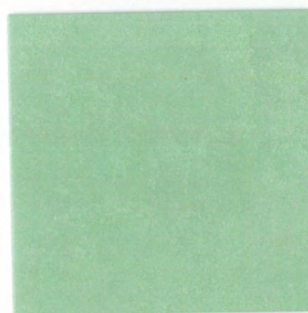
M639



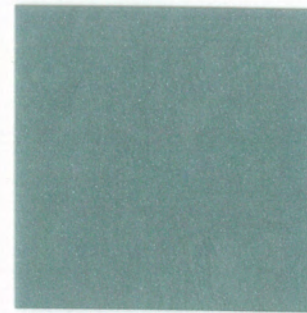
M640



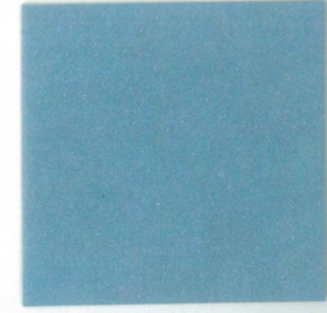
M641



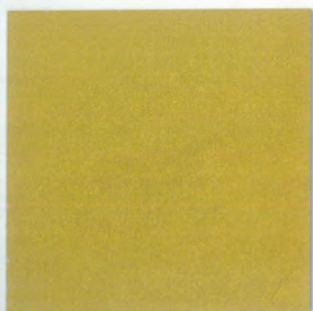
M642



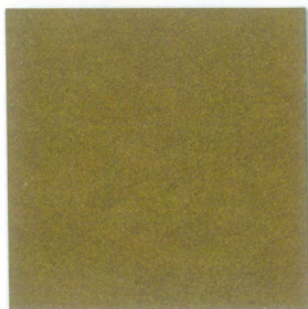
M643



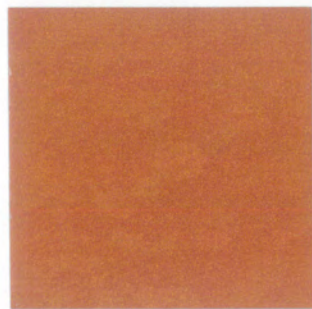
M644



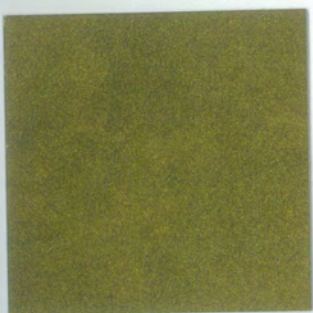
M645



M646



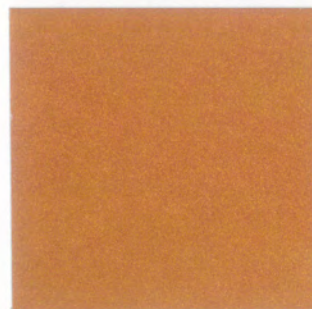
M647



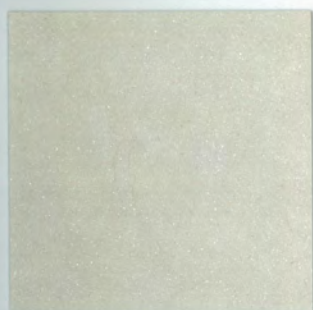
M648



M649



M650



M651



M652



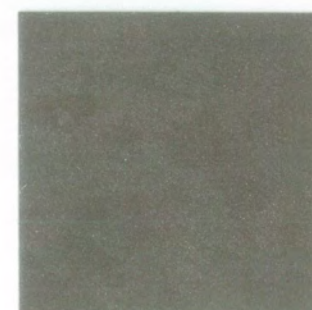
M653



M654



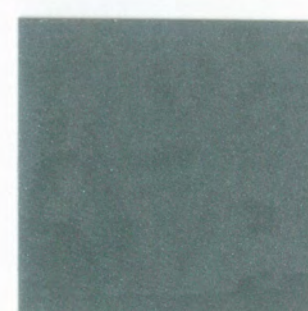
M655



M656



M657



M658



M659



Cadoro Velvet

*Sono i decorativi che nascono
da un'accurata ricerca tutta italiana,
dove l'amore per il design e il buon gusto
fanno da guida al processo realizzativo.*

*Vengono lavorati meticolosamente
per poter avere degli effetti particolari,
quelli che li rendono così affascinanti e unici.*

*These are the decorative products that stem from
a careful, all-Italian research,
where a love of design and good taste
guide the production process.*

*They are meticulously processed
to create the special effects
which make them so alluring and unique.*

made in Italy



CADORO VELVET - S. 377

IT Finitura decorativa effetto vellutato per interni

Elegante e raffinata finitura per interni che riproduce l'effetto del velluto, ricco di ombreggiature e morbido al tatto, indicata sia in ambienti classici d'epoca e sia in contesti moderni. Applicare CADORO VELVET, sul fondo asciutto, già verniciato con DECORFOND, con pennello o frattazzo in plastica o d'acciaio stendendo il prodotto in modo uniforme. Ad essiccazione avvenuta della prima mano, applicare con frattazzo in plastica o d'acciaio un ulteriore strato di CADORO VELVET creando con l'utensile delle rotazioni in direzioni contrapposte realizzando sfaccettature vellutate.

FR Finition de décoration pour intérieurs effet veloute

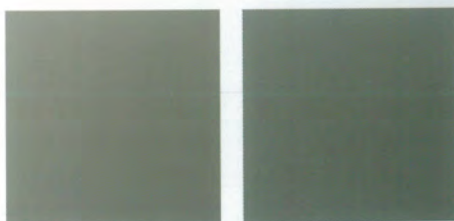
Finition élégante et raffinée pour intérieurs qui reproduit l'effet du velours, riche en ombres et souple au toucher, indiquée pour les décors classiques d'époque, aussi bien que pour les décors modernes. Appliquer CADORO VELVET sur DECORFOND séché, en utilisant le pinceau ou bien la taloche en plastique ou en acier, en étalant le produit de manière uniforme. Une fois la première couche séchée, appliquer avec la taloche en plastique ou en acier une autre couche de CADORO VELVET en effectuant avec l'outil des rotations ou en maniant l'outil en directions opposées pour réaliser des nuances chromatiques veloutées.

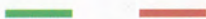
EN Velvety effect decorative finish for interiors

An elegant, sophisticated finish for interiors which reproduces a velvet effect that is rich in shading and soft to the touch, and suitable for both classical settings and modern contexts. Apply CADORO VELVET over DECORFOND when dried, with brush or plastic or steel trowel, spreading the paint evenly. Once the first coat has dried apply a second coat of CADORO VELVET with the plastic or steel trowel, using the tool in a rotating movement or in criss-crossed movement to create velvety effect.

RU ДЕКОРАТИВНОЕ ПОКРЫТИЕ С ВЕЛЬВЕТОВЫМ ЭФФЕКТОМ ДЛЯ ИНТЕРЬЕРА

Элегантное и изысканное декоративное покрытие, создает ощущение отделки стен мягким велветом, преобразует пространство в помещениях выполненных, как в классическом, так и в современном стилях. Нанести CADORO velvet на сухую основу пластиковой или стальной кельмой, равномерно распределяя его. После высыхания первого слоя нанести пластиковой или стальной кельмой следующий слой CADORO velvet, выполняя инструментом вращения или мази в противоположных направлениях для создания переливов двух тонов. Сразу же по окончании работы инструменты промывают водой.





Cadaro Velvet M647



made in Italy



CADORO VELVET S. 377

IT Informazioni tecniche

ATTREZZI: Pennello e frattazzo inox/plastica
STRATI: 2
DILUIZIONE: pronto all'uso
PULIZIA DEGLI ATTREZZI: con acqua subito dopo l'uso
RESA: 3-5 m²/l

FR Informations techniques

OUTILS: Pinceau et taloche en plastique
COUCHES: 2
DILUTION: prêt à l'emploi
NETTOYAGE DES OUTILS: avec de l'eau après leur utilisation
RENDEMENT: 3-5 m²/l

EN Technical informations

TOOLS: Brush and steel/plastic trowel
COATS: 2
DILUTION: ready to use
CLEANING OF TOOLS: with water immediately after use
SPREADING RATE: 3-5 m²/l

RU ТЕХНИЧЕСКАЯ ИНФОРМАЦИЯ

ИНСТРУМЕНТЫ: Пластиковая или стальная кельма
СТАТИКОЛИЧЕСТВО СЛОЁВ: 2
РАЗВЕДЕНИЕ: готово к применению
ОЧИСТКА ИНСТРУМЕНТОВ: сразу после использования промыть инструменты водой
РАСХОД МАТЕРИАЛА: 3-5 м²/л

I colori di questa cartella hanno valore indicativo. | The color samples in this color chart should be considered purely indicative.

www.san-marco.com

san marco
SISTEMI VERNICIANTI PER L'EDILIZIA

San Marco Group S.p.A.
Via Alta, 10, 30020 Marcon (VE), Italia
T +39 041 4569322 - F +39 041 5950153
info@san-marco.it
export@san-marco.it
www.san-marco.com

Assistenza tecnica

800 853048

Colorimetria

800 131611

COMPANY WITH
QUALITY SYSTEM
CERTIFIED BY DNV GL
= ISO 9001 =



/sanmarcospa

